



# Brook Street York YO31 7DE

£1,150,000



A rare opportunity to acquire the freehold interest in two high performing student investment properties in one of York's most sought after central locations. Comprising 40 Clarence Street and Hill House, Brook Street, the portfolio offers twelve bedrooms and a combined annual income of approximately £121,000, positioned within a stone's throw of York St John University and only a short walk from the city centre.

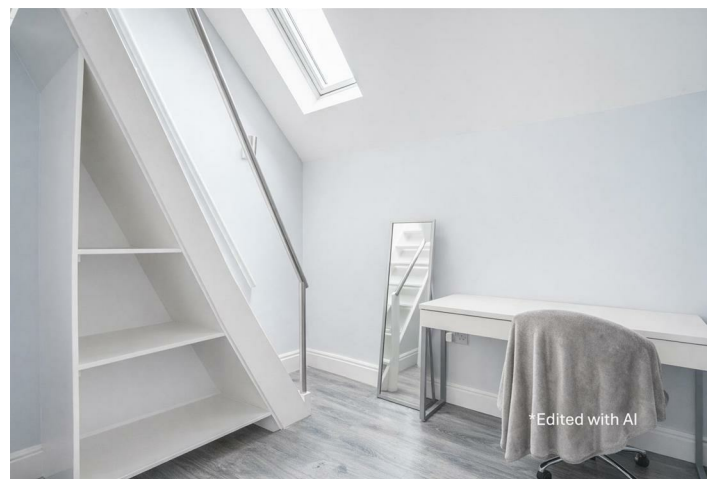
Both properties are ideally located to capture consistent student demand, with easy access to the University of York further strengthening long term occupancy. This is a turnkey investment with immediate income and strong underlying fundamentals.

40 Clarence Street is a substantial period property arranged over three floors and fully let as a six bedroom student house. The property has been taken back to brick and comprehensively refurbished with upgraded insulation, creating a modern and efficient investment. It offers generous room sizes, a large communal living space opening onto a courtyard, modern kitchen and multiple bathrooms.

Hill House is a purpose built six bedroom eco home, also fully let and generating a comparable income. Designed for efficiency, it benefits from underfloor heating and solar panels, resulting in low running costs. The layout is well suited to student living with an open plan communal space and duplex style bedrooms.

The combined portfolio provides a balanced mix of character and modern accommodation, appealing to a broad tenant base and offering a resilient income stream.

Offered at £1,250,000, the portfolio produces a gross yield of approximately 9.14 percent, presenting an excellent opportunity to acquire a prime central York investment with strong returns and long term demand.





Brook Street

York

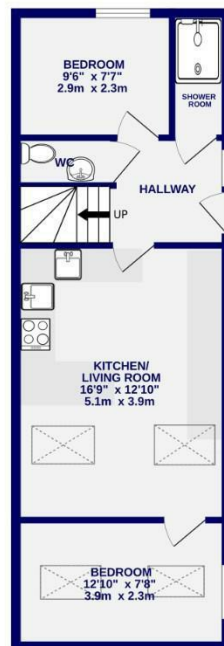
YO31 7DE

Freehold

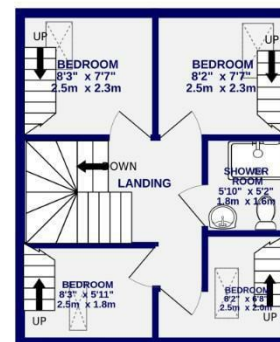
Council Tax Band -

- Freehold HMO Development
- Two Adjoining Buildings
- Twelve Bedrooms
- Four Bathrooms
- Gross Yield of 9.14%
- Located Behind St Johns University
- EPCS B and C

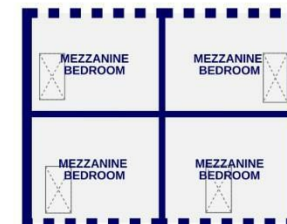
GROUND FLOOR  
494 sq.ft. (45.9 sq.m.) approx.



1ST FLOOR  
329 sq.ft. (30.5 sq.m.) approx.



2ND FLOOR  
210 sq.ft. (19.5 sq.m.) approx.



TOTAL FLOOR AREA : 1033 sq.ft. (96.0 sq.m.) approx.

Whilst every attempt has been made to ensure the accuracy of the floorplan, measurements of rooms and any other items are approximate, if included in the plan the garage/storeroom will form part of the overall floor area and no responsibility is taken for any error, omission or mis-statement. This plan is for illustrative purposes only and should be used as such by any prospective purchaser. The services, systems and appliances shown have not been tested and no guarantee as to their operability.  
Made with Metroplan 0026

These particulars have been prepared as accurately and as reliably as possible, but should not be relied upon as 'statement of fact'. If there is any point which is of particular importance to you, please contact the office and we would be pleased to check the information. We have not tested any services, appliances, equipment or facilities and nothing in these particulars should be deemed to be a statement that they are in good working order, or that the property is in good structural condition or otherwise. Any areas, measurements, floor plans or distances referred to are given as a guide only and are not precise. Purchasers must satisfy themselves by inspection or by otherwise regarding the items mentioned above and as to the correctness of each of the statements contained in these particulars. No person in the employment of Ashtons has any authority to make or give any representation or warranty whatsoever in relation to this property or these particulars nor enter into any contract relating to the property on behalf of the vendor.